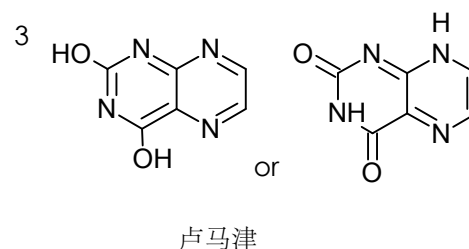
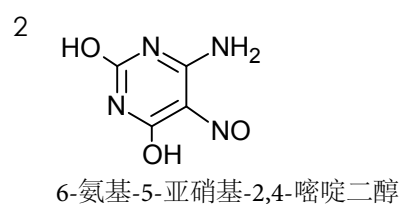
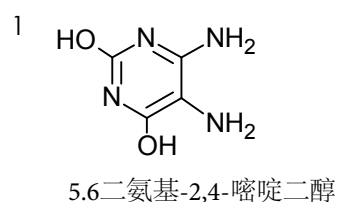
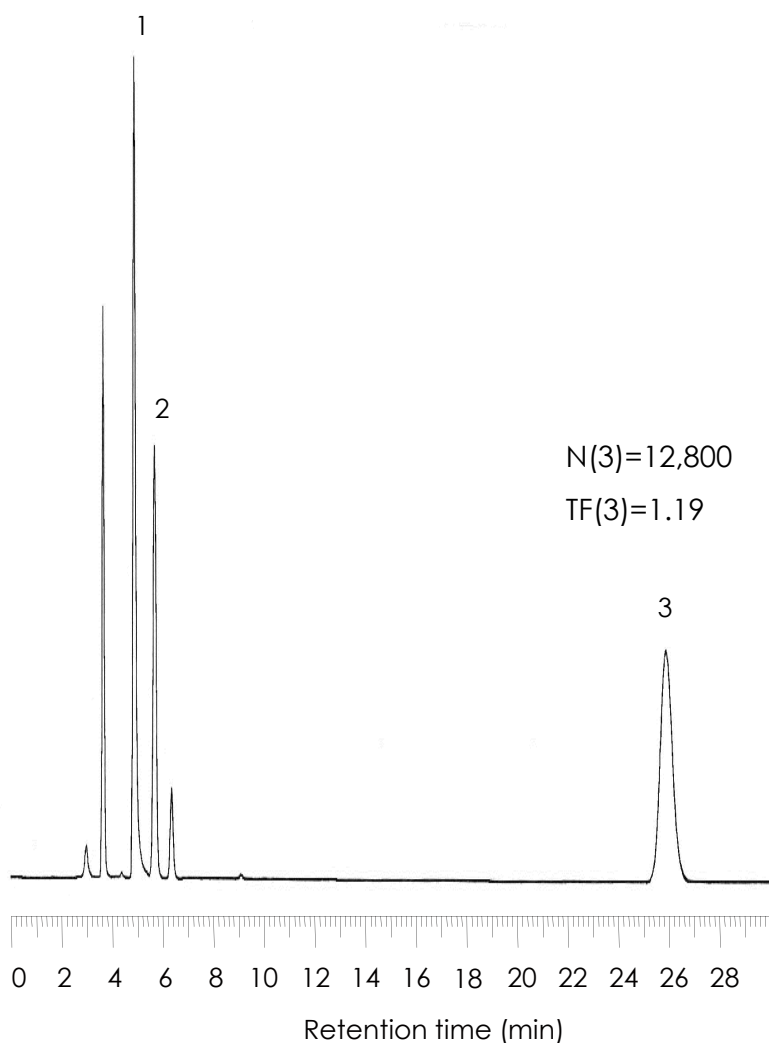


卢马津及其有关物质的分离

Sunniest RP-AQUA 5 μ m 250 x 4.6 mm i.d.



N: 塔板数

TF: 美国药典拖尾因子

色谱柱: Sunniest RP-AQUA, 5 μ m 250 x 4.6 mm

流动相: 20mM Phosphate buffer pH6.0

流速: 1.0 mL/min

柱温: 40 °C

检测器: UV@250nm

样品: 3=卢马津