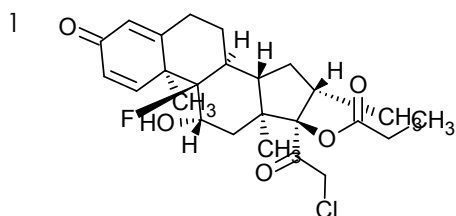
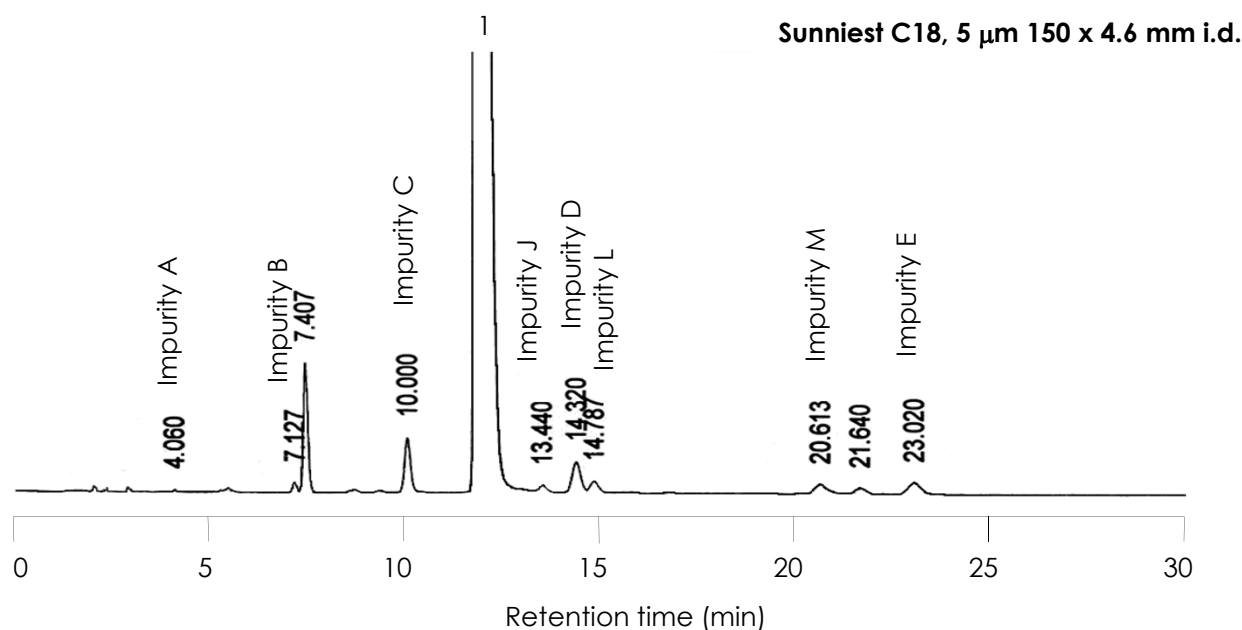


丙酸氯倍他索及其有关物质的分离



丙酸氯倍他索

色谱柱: Sunniest C18, 5 μ m 150 x 4.6 mm

流动相:

Solution A, 3.33 g NaH₂PO₄ dissolve in 425 ml Water, Adjust pH 5.5 with 10 % NaOH

Solvent B, Acetonitrile

Solvent C, Methanol

425ml Solution A + 475 ml Solvent B+ 100 ml Solvent C

流速: 1.0 mL/min

柱温: 30 °C

测试探头 : 20 mg Sample in 20 ml Mobile phase

进样量: 10 μ L