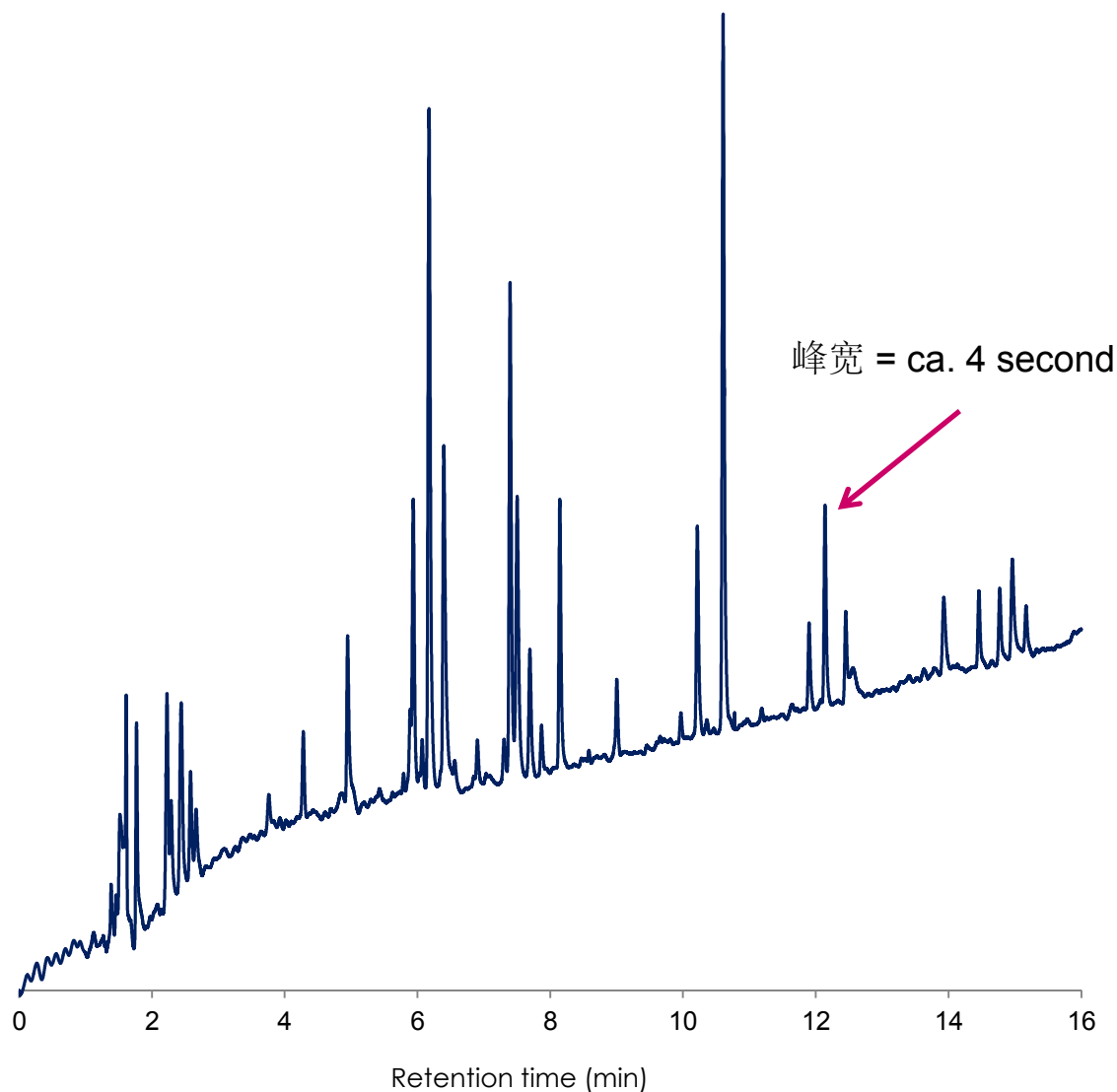


肌红蛋白胰蛋白酶消化

SunShell C18-WP 2.6 μm , 150 x 4.6 mm i.d.

色谱柱: SunShell C18-WP, 2.6 μm (16 nm) 150 x 4.6 mm,

流动相: A) 0.1% TFA in acetonitrile/water(10:90)

B) 0.1 % TFA in cetonitril Gradient program: %B 0% – 100% in 35 min

流速: 1.0 mL/min

柱温: 25 $^{\circ}\text{C}$

检测器: UV@210 nm

样品: 肌红蛋白胰蛋白酶消化

UHPLC: X-LC (Jasco)