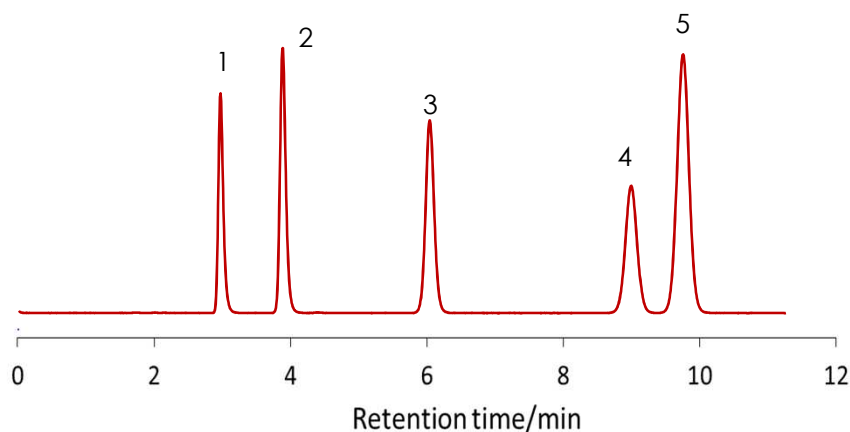


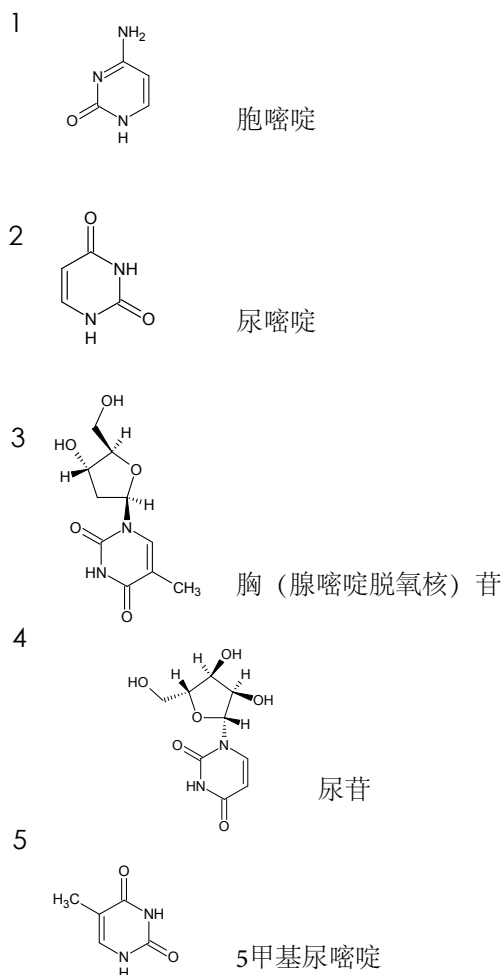
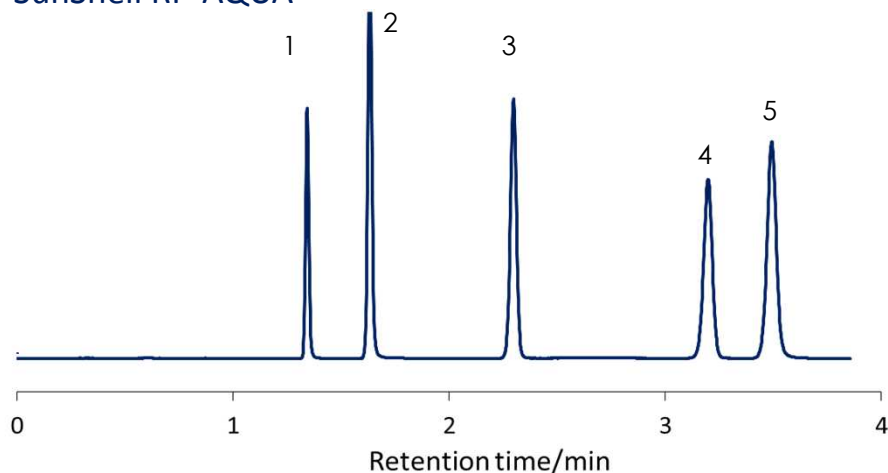
核酸碱基的分离

SunShell RP-AQUA 2.6 μm , 150 x 4.6 mm i.d.

Sunniest RP-AQUA



SunShell RP-AQUA



色谱柱: Sunniest RP-AQUA 5 μm 150 x 4.6 mm
SunShell RP-AQUA, 2.6 μm 150 x 4.6 mm

流动相: 10mM Phosphate buffer pH7.0

流速: 1.0 mL/min for Sunniest,

1.5 ml/min for SunShell

柱温: 40 $^{\circ}\text{C}$

检测器: UV@250nm

样品: 1 = 胞嘧啶, 2 = 尿嘧啶, 3 = 胸 (腺嘧啶脱氧核) 苷, 4 = 尿苷, 5 = 5甲基尿嘧啶

TF: USP 拖尾因子

	Plate(5)	Resolution (4,5)
Sunniest	14,000	1.98
SunShell	30,000	3.79