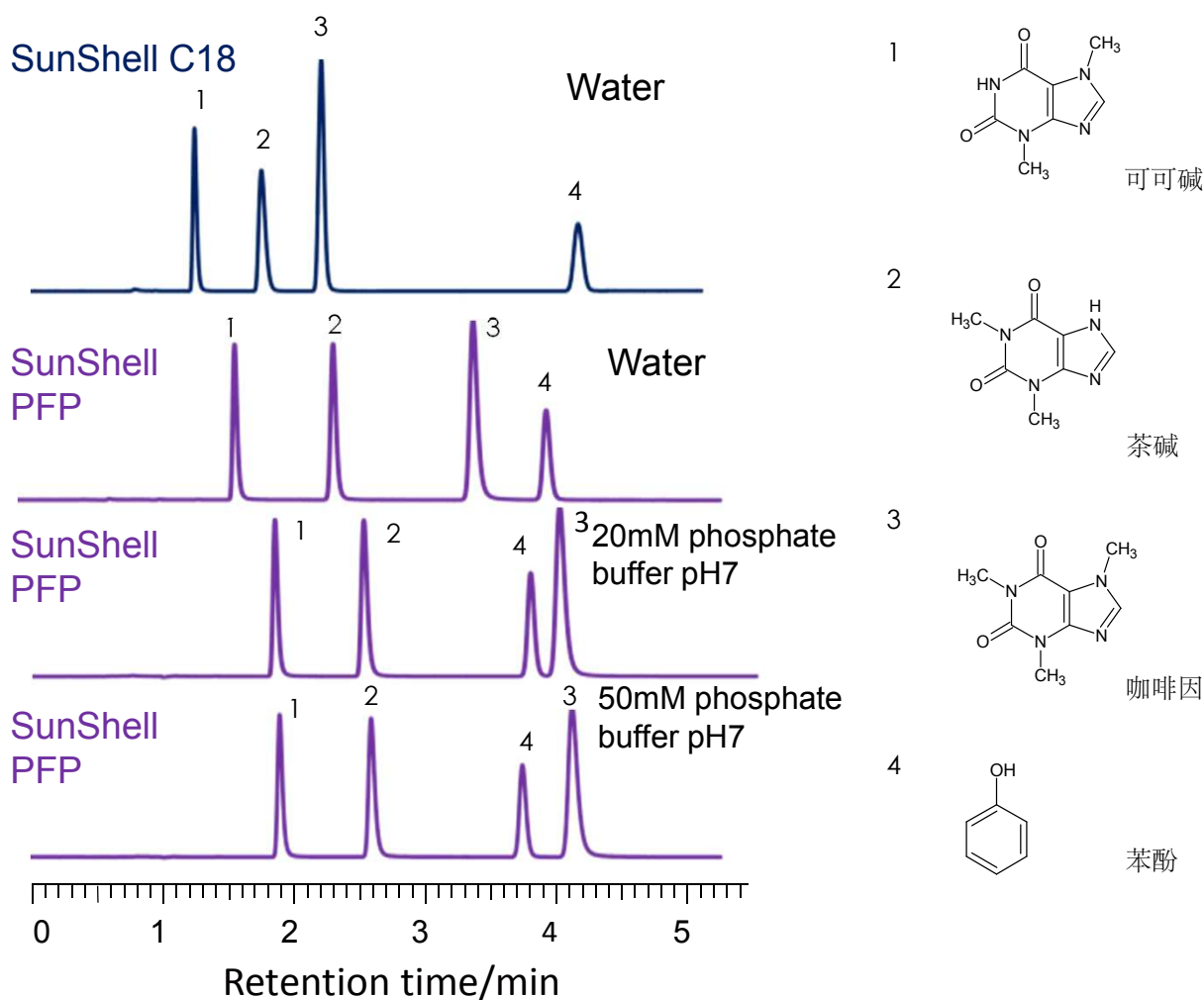


## 黄嘌呤类的分离

SunShell PFP 2.6  $\mu\text{m}$ , 150 x 4.6 mm i.d.色谱柱: SunShell C18, PFP 2.6  $\mu\text{m}$  150 x 2.1 mm流动相:  $\text{CH}_3\text{OH}/\text{water}$  or buffer=30/70

流速: 0.3 mL/min

柱温: 25  $^\circ\text{C}$ 

检测器: UV@250nm

样品: 1 = 可可碱, 2 = 茶碱

3 = 咖啡因, 4 = 苯酚