

16 种多环芳烃

色谱柱: Chemalink CM-PAH 4.6×250mm, 5 μm

检测波长: 220nm

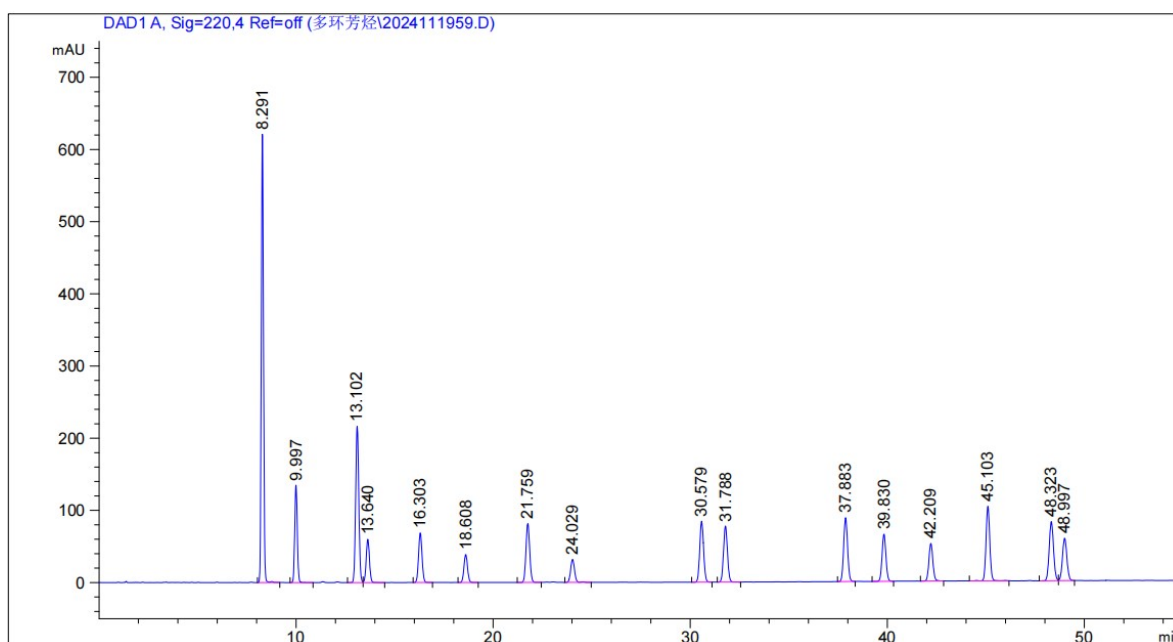
温 度: 25 度

流 速: 1.5ml/min

进 样 量: 10 μl

流 动 相:

时间 (min)	A (水) %	A (乙腈) %
0	40	60
12	35	65
45	0	100
60	100	100



序号	名称	保留时间 [min]	峰面积 [mAU*s]	峰高 [mAU]	对称因子	峰宽	塔板数	分离度
1	Naphthalene 萘	8.506	4743.87744	613.25635	1.06	0.1206	27574	/
2	Acenaphthylene 芴烯	10.237	1200.45251	133.49362	1.05	0.1404	29473	7.69
3	Acenaphthene 芴	13.404	2361.98218	212.41505	1.04	0.1738	32946	11.84
4	Fluorene 芴	13.944	675.82861	59.14279	1.05	0.1787	33745	1.80
5	Phenanthrene 菲	16.613	829.32953	68.76881	1.04	0.1891	42748	8.53
6	Anthracene 蒽	18.911	483.35782	38.60155	1.03	0.1963	51418	7.01
7	Anthracene 蒽	22.041	103.35876	82.00566	1.05	0.2033	65097	9.20
8	Pyrene 芘	24.312	439.21304	31.87886	1.04	0.2111	73471	6.44
9	Benzo(a)anthracene 苯并(a)蒽	30.827	1132.62390	84.25691	1.06	0.2111	118112	18.13
10	Chrysene 屈	32.029	1057.87500	77.48665	1.03	0.2156	122335	3.31
11	Benzo(b)fluoranthene 苯并(b)荧蒽	38.075	1210.19348	88.62582	1.05	0.2133	176440	16.56
12	Benzo(k)fluoranthene 苯并(k)荧蒽	39.995	875.09039	65.47395	1.05	0.2111	198805	5.31
13	Benzo(a)pyrene 苯并(a)芘	42.393	613.27039	45.06935	1.05	0.2133	218753	6.64
14	Indeno(1,2,3-cd)pyrene 茚芘(1,2,3-cd)芘	45.191	1378.82056	104.49755	1.05	0.2111	273659	7.89
15	Dibenzo(a,h)anthracene 二苯并(a,n)蒽	48.467	1213.40417	80.01648	1.06	0.2383	229085	8.72
16	Benzo(g,hi)perylene 苯并(ghi)北(二萘嵌苯)	49.098	898.42334	58.48759	1.05	0.2422	227623	1.64