

# 樟脑手性异构体分离样品分析报告

——四川健林药业

## 1、仪器

气相色谱仪：Agilent 8890

## 2、色谱柱

名称：CBX-DEX2

最高使用温度：230℃

规格：柱长30m 内径0.25mm 膜厚0.25μm

## 3、实验条件

柱温：50℃(2min)to 120℃ at 1℃/min, to 220℃ (5min) at 30℃/min

汽化温度：220℃

载气：N<sub>2</sub>

检测器：FID

检测温度：230℃

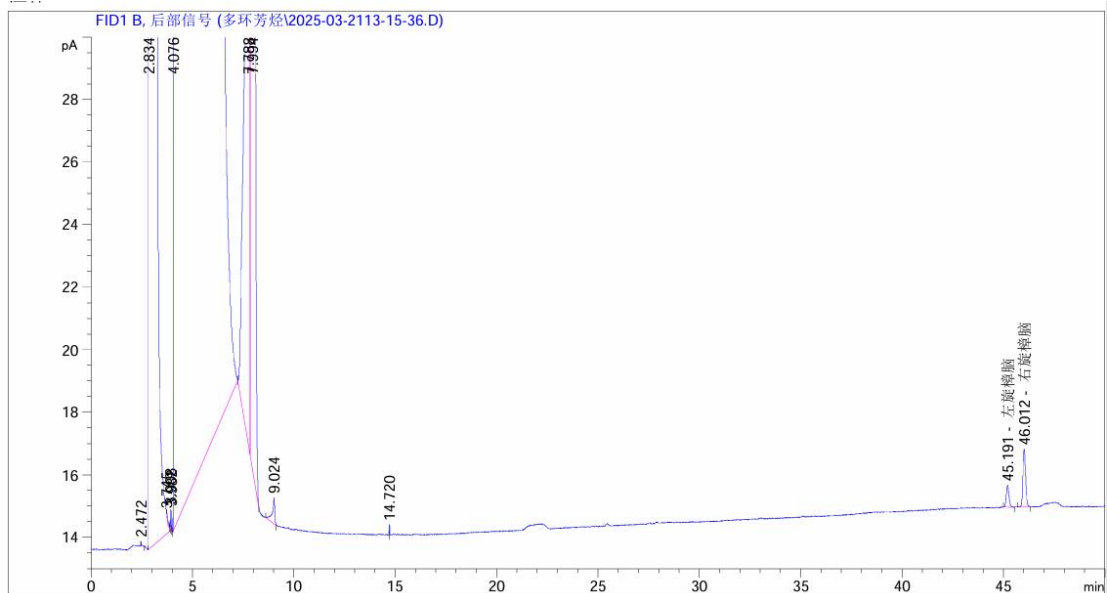
柱流量：1mL/min

分流比：10:1

进样量：1μL

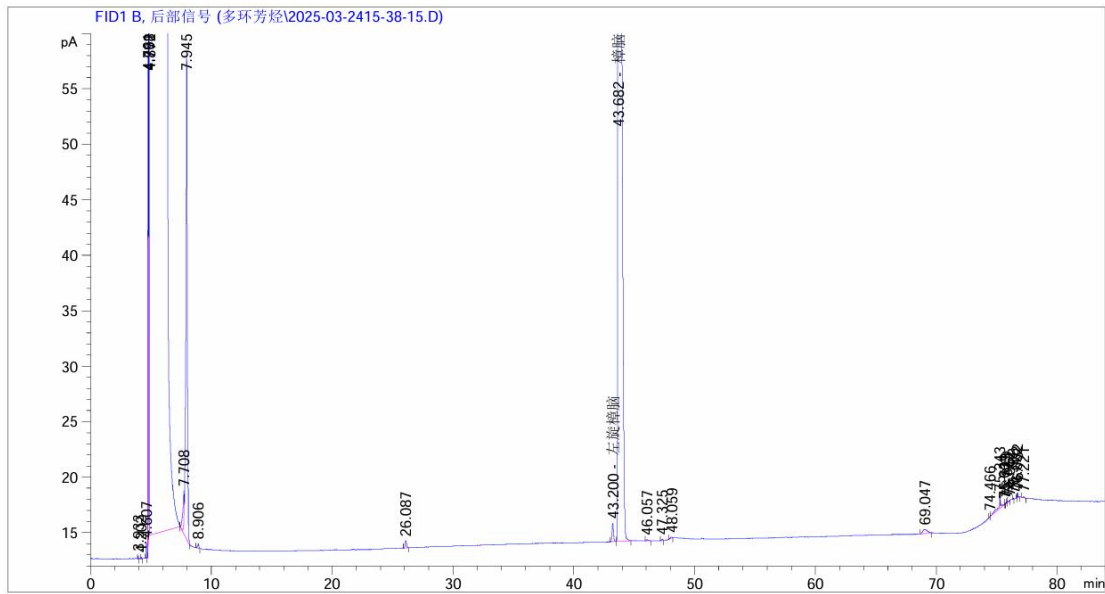
## 4、实验结果

样品1：左旋樟脑+右旋樟脑



保留时间 [min]	k'	峰面积 [pA*s]	峰高 [pA]	对称 因子	峰宽 [min]	塔板数	分离度	信号 噪声
2.472	0.29	3.23102e-1	1.55493e-1	0.33	0.0175	110512	-	5.6
2.834	0.48	1.87681e4	1817.55188	0.05	0.1481	2025	2.57	6.5e4
3.745	0.95	7.20567e-1	1.33247e-1	0.10	0.0327	72877	5.93	4.8
3.908	1.04	6.02346e-1	6.13078e-1	1.00	0.0150	376105	4.00	22.1
3.982	1.07	7.48157e-1	6.43754e-1	0.85	0.0181	268231	2.64	23.2
4.076	1.12	3.26300e5	7521.94873	0.01	0.4903	382	0.22	2.7e5
7.788	3.06	411.51630	25.58870	4.55	0.2754	4430	5.70	920.5
7.994	3.16	693.66937	71.92682	0.95	0.1242	22959	0.61	2587.3
9.024	3.70	7.04591	8.27081e-1	2.40	0.0983	46666	5.44	29.8
14.720	6.67	1.10544e-1	3.28664e-1	1.09	6.22e-3	#####	64.01	11.8
45.191	22.54	6.59497	7.02888e-1	0.80	0.1425	557140	2e2	25.3
46.012	22.97	17.17114	1.85487	0.92	0.1450	557840	3.36	66.7
52.751	26.48	1.28129	1.07486e-1	0.86	0.1583	614946	26.10	3.9
54.146	27.21	2.39862e-1	7.84564e-1	0.99	6.27e-3	#####	9.96	28.2
72.559	36.80	3.68073	3.61414e-1	0.73	0.1742	961555	1e2	13.0
74.179	37.65	8.70460e-1	3.24599e-1	1.31	0.0389	#####	8.93	11.7
74.329	37.72	4.08837e-1	1.15216e-1	2.17	0.0411	#####	2.20	4.1
75.172	38.16	1.78890	2.97040e-1	5.38	0.0438	#####	11.66	10.7
76.319	38.76	26.95408	5.95904e-1	12.50	0.1433	1571362	7.20	21.4
76.761	38.99	8.64311	5.03038e-1	14.78	0.1196	2281136	1.97	18.1
77.086	39.16	8.24802	3.35429e-1	8.11	0.2228	663010	1.12	12.1
77.236	39.24	1.13631	1.89540e-1	3.80	0.0703	6680890	0.60	6.8
77.553	39.40	2.35349	4.87818e-1	1.53	0.0733	6193893	2.59	17.5
77.705	39.48	2.38684	4.20580e-1	4.40	0.1243	2165858	0.90	15.1
77.786	39.52	1.96535	3.78056e-1	2.49	-	-	-	13.6
77.854	39.56	37.65155	14.03330	1.28	0.0350	#####	-	504.8
78.138	39.71	6.36138e-1	1.62101e-1	0.56	0.0596	9527707	3.52	5.8
79.068	40.19	3.69273e-1	1.12093e-1	0.55	0.0372	#####	11.30	4.0

样品2: 供试品+左旋樟脑; 进样量0.4μL



保留时间 [min]	k'	峰面积 [pA*s]	峰高 [pA]	对称 因子	峰宽 [min]	塔板数	分离度	信号 噪声
3.933	1.05	4.47255e-1	2.68373e-1	0.80	0.0237	153024	-	8.9
4.202	1.19	3.43604e-1	1.34303e-1	0.71	0.0354	77972	5.34	4.4
4.607	1.40	3.09250	1.45188	0.98	0.0325	111306	7.01	47.9
4.761	1.48	63.37524	44.65769	1.20	0.0251	199030	3.15	1474.7
4.798	1.50	179.20082	77.99038	0.74	0.0383	86744	0.68	2575.4
4.872	1.54	1.11564e5	2825.67139	0.01	0.5803	390	0.14	9.3e4
7.708	3.02	25.93324	3.07014	3.66	0.1253	20953	4.72	101.4
7.945	3.14	373.63147	43.81649	1.55	0.1150	26443	1.16	1446.9
8.906	3.64	2.99461	4.40181e-1	1.45	0.1033	41143	5.17	14.5
26.087	12.59	5.55981	6.58391e-1	0.96	0.1292	225968	86.83	21.7
43.200	21.51	14.21024	1.67345	0.85	0.1308	604005	77.34	55.3
43.682	21.76	2223.49780	131.28528	0.23	0.2667	148652	1.43	4335.3
46.057	22.99	1.18020	1.13548e-1	0.63	0.1292	704359	7.05	3.7
47.325	23.66	9.91549e-1	1.31860e-1	1.30	0.1225	826835	5.92	4.4
48.059	24.04	1.22424	1.17117e-1	1.75	0.1967	330771	2.70	3.9
69.047	34.97	9.88376	3.67251e-1	0.83	0.4483	131399	38.23	12.1
74.466	37.79	2.54512e-1	1.02290e-1	1.62	0.0499	#####	12.78	3.4
75.243	38.20	10.65355	1.14045	2.11	0.0433	#####	9.79	37.7
75.631	38.40	1.49136	1.39589e-1	5.72	0.0690	6662422	4.06	4.6
75.719	38.45	2.06893e-1	1.00660e-1	1.93	0.0241	#####	1.11	3.3
75.845	38.51	5.39683e-1	1.40651e-1	1.97	0.0699	6516136	1.58	4.6
76.062	38.63	9.59812e-1	1.21498e-1	6.06	0.0568	9922373	2.01	4.0
76.368	38.79	4.40101e-1	1.34567e-1	0.93	0.0471	#####	3.46	4.4
76.662	38.94	4.92821e-1	2.48626e-1	0.96	0.0325	#####	4.34	8.2
76.732	38.98	1.63194	4.05699e-1	0.51	0.0450	#####	1.07	13.4
77.221	39.23	7.04476e-1	1.53380e-1	0.93	0.0483	#####	6.15	5.1