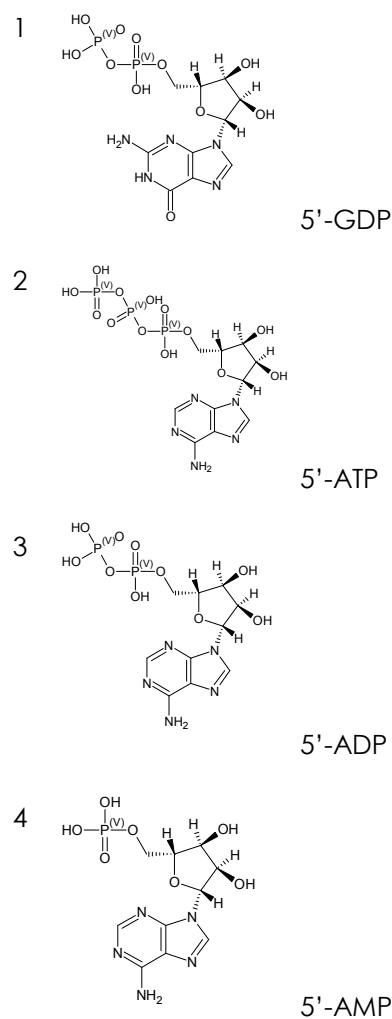
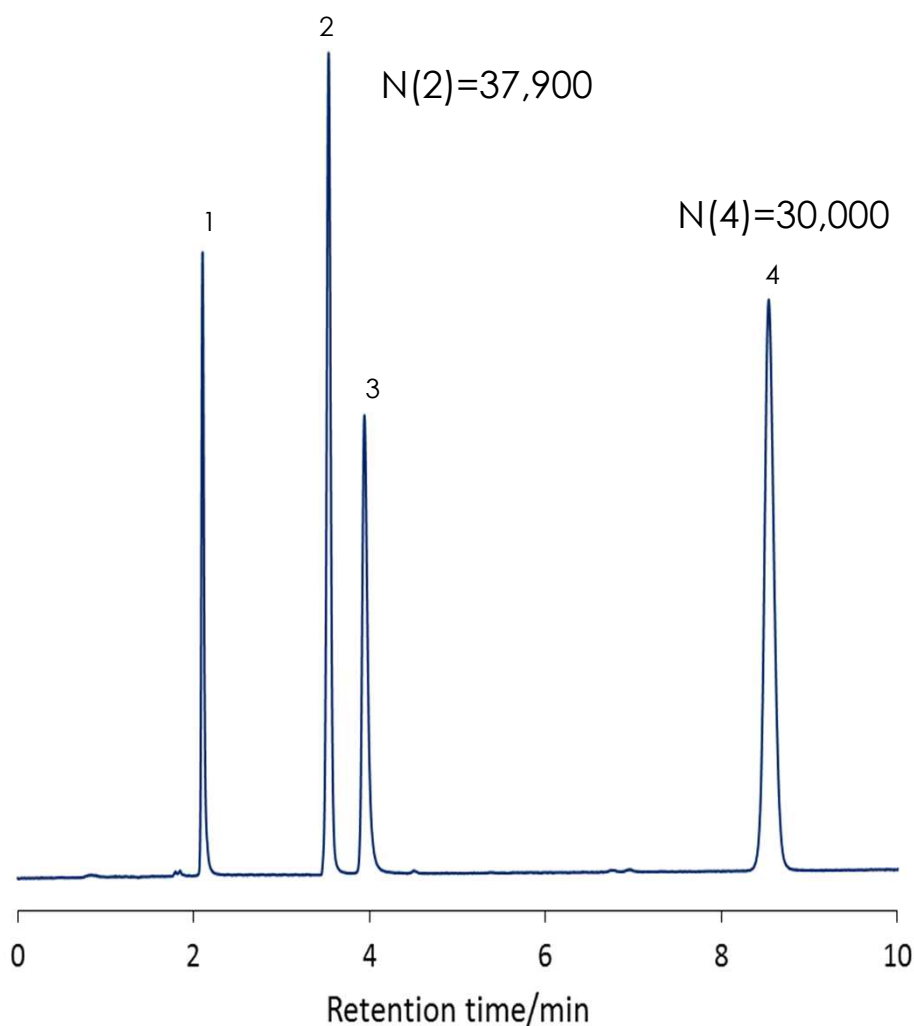


核苷酸的分离

SunShell RP-AQUA 2.6 μm , 150 x 4.6 mm i.d.

SunShell RP-AQUA



色谱柱: SunShell RP-AQUA 2.6 μm , 150 x 4.6 mm i.d.

流动相: 20mM Phosphate buffer pH6.0

流速: 1.0 mL/min

柱温: 25 $^{\circ}\text{C}$

检测器: UV@250nm

样品: 1 = 5'-GDP, 2 = 5'-ATP, 3 = 5'-ADP, 4 = 5'-AMP

UHPLC: X-LC (Jasco)