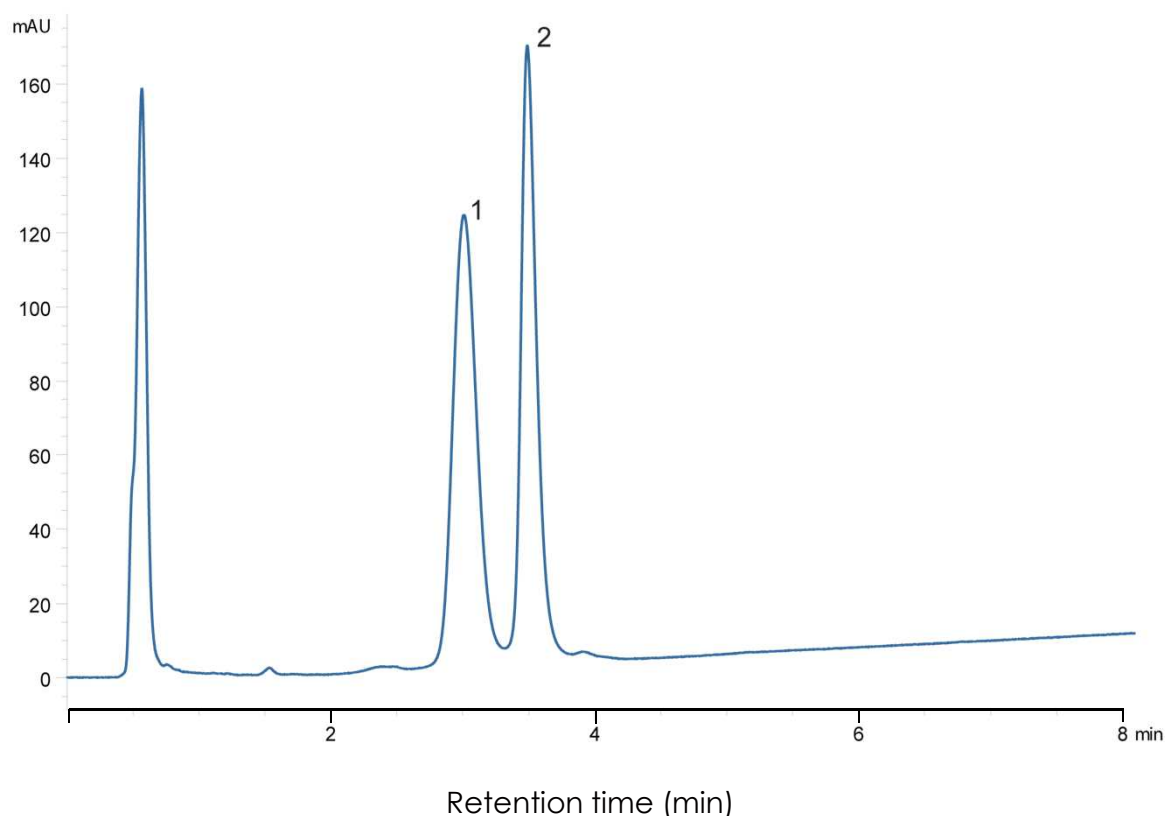


核苷酸酶A/B分离(1)

Amplus C18-16 2.6 μm , 100 x 2.1 mm i.d.

Amplus C18-16混合核糖核酸酶A/B



色谱柱: Amplus C18-16, 2.6 μm (16 nm) 100 x 2.1 mm, 流

动相: A) 0.1% TFA in water

B) 0.1% TFA in acetonitrile

梯度时间:	Time(min)	0	7
	%B	25	35

流速: 0.50 mL/min ,

柱温: 40 $^{\circ}\text{C}$

检测器: UV@214 nm,

进样量: 10 μL ,

浓度: 0.01 $\mu\text{g}/\mu\text{L}$ each protein,

样品:

1. 核糖核酸酶B

2. 核糖核酸酶A